



Canada's **Building** Centre®

**Project Of The Month**

# ROOFING & SIDING

TIMBER MART carries top quality roofing & siding products from trusted suppliers. Our Specialists can ensure a successful roofing & siding project by helping you choose the right materials for your home and budget.

# What's in a shingle?

The primary function of any roof is to protect your home and contents against inclement weather. When choosing roofing, you should consider the climate you live in, the architectural design of your house, how long you plan to live in your home, what the neighbouring houses look like and your budget.

There are many types of roofing available plus many sub-types. Looking at the whole realm can be confusing and make your head spin. For simplicity, we will look at one of the most common and affordable, asphalt shingles. These fall into 3 categories. 3-tab, fibreglass and architectural laminated shingles. Each has their own distinctive look and are a great choice for almost any home.



**3-Tab** An economical choice with easy installation and a vast array of colour blends. These are the most affordable shingles but they are thinner, wear out more quickly and don't stand up to big winds as much as fibreglass or architectural shingles.



**Fibreglass** Fibreglass shingles are one of the more popular roofing alternatives today. They have a sculpted look and come in a vast number of styles and colours. If there's a particular style you have in mind, you should be able to find it in a fibreglass version.



**Architectural laminated** These cost more and come in more luxurious looking styles, some can simulate tile or wood shake designs. If you're planning to stay in your home for many years to come, these shingles will provide superior weather resistance and a solid long-term value.

# PROJECT OF THE MONTH: ROOFING & SIDING



Canada's Building Centre

# Metal roofing

## Beautiful. Worry-free. A sustainable lifetime roof.

Properly installed, a metal roof should last as long as your house. For this reason, a metal roof is an investment that will increase the resale value of your home. An important early decision when considering a metal roof, is to determine the look you want for your home. Residential metal roofing is available in panels and shingles and these two options have very different appearances. The most familiar is panel metal roofing that has raised ribs that run vertically on a roof. Metal shingles are formed into shapes that imitate tile, wood shakes and slate. Characteristics of both types of metal roofing are virtually the same. Both require little maintenance, are lightweight, fire resistant and keep your home cooler in summer and warmer in winter. Some types of metal roofing can be applied over an existing roof without the need for additional structural support. This depends on where you live so check your local building code prior to installation. And when the time comes, metal is 100% recyclable so nothing ends up in landfill. Metal roofing comes in a wide range of colours and finishes; you can always find one that's perfect for the style of your home.



**VIDEO** Jim Caruk takes you through a Vicwest roofing project showcasing Summerside steel shingles.



Canada's Building Centre

# The importance of Attic ventilation

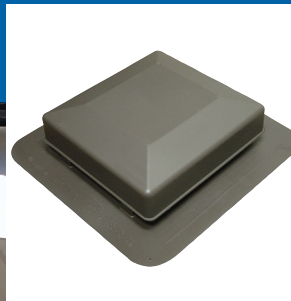
Proper attic ventilation is an important component of an energy-efficient home since it keeps your house warm in winter and cooler in summer. It also extends the life of your roof by venting moisture from your attic to prevent rot, mold, and mildew. To provide proper attic ventilation, your home should have both soffit and ridge vents and sometimes gable vents. Soffit vents bring outside air into your attic while ridge and gable vents let hot air out of your attic. This system provides air movement under the roof that is exhausted out the top of the roof through the ridge vent. Shingle warranties may make coverage conditional on meeting their minimum ventilation requirements. Consult manufacturer for specific ventilation requirements when selecting a shingle product.



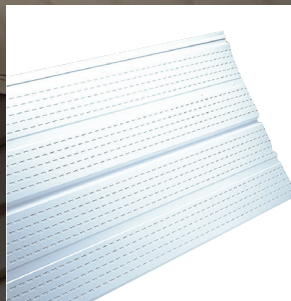
**Roof turbine** Internal flow-through technology provides superior airflow in this maintenance free, polypropylene roof vent. Squeak-free and resistant to extreme heat and cold.



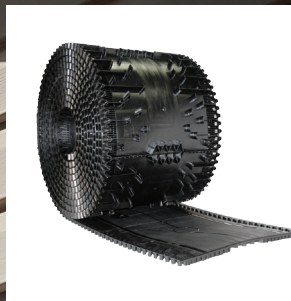
**Gable vent** Gable vents provide mostly cross ventilation to extend a roof's lifespan and are placed where a portion of a house or garage comes to a peak.



**Domed roof vent** Also known as turtle vents, a dome vent is simply a roof over a screen assembly. It's simple, economical and reliable – and the most common roof vent you'll see.



**Soffit vents** Allow fresh air to enter the attic and the roof vents allow the hot and moist air to exit the attic. You need both for a healthy attic. Baffles may also be necessary to keep the soffit vent clear and not obstructed by insulation.



**Continuous ventilation** Ridge vents remove hot air from the peak of the roof, with wind providing the suction to remove hot air from your attic. Maintenance free, insect proof and quiet.



# When it's time for a new roof

There are signs inside and outside your home that let you know when it's time for a new roof or roof repairs

**VIDEO** Protect your roof with Tyvek Protec roofing underlayments.



**Indoor roof inspection**



**Outdoor roof inspection**

The most obvious sign you might need a new roof is finding water inside your home. To prevent leaks from getting through to your living space, regularly check your attic especially after a rain storm or if you notice an ice dam along your eaves. Keep in mind that water can travel a fair distance from the actual leak to where it eventually shows itself. Look for dark spots in attic lumber, especially around vents and chimneys, caused by an active leak or condensation from poor roof ventilation. A total roof replacement may not be necessary, perhaps a few shingles have blown off or some flashing has torn loose and has exposed the underlying roof deck to the elements. Continue with an outdoor roof inspection to determine the extent of damage and the condition of your roofing shingles. While you are in the attic, check to see if the roof decking is sagging between the rafters. If it is, it will need to be replaced when a new roof is installed.

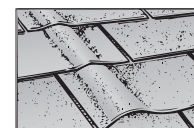
**What's an ice dam?** Ice dams form when snow on the roof melts, runs down to the eaves and freezes. As more water runs down and encounters the ice dam, it may then run up and under the shingles, potentially penetrating the roof deck.

Check for waves and ripples along shingle rows, adhesive failure on tabs, surface dull spots, broken or loose shingles. Loose grit on the surface is an indication of shingle decay.



**Bare spots**

The protective granular surface of shingles wears off, often accumulating in the gutter.



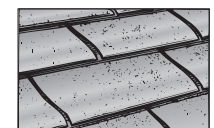
**Buckling**

A visible distortion in the horizontal lines of shingles, usually running in a straight line up the slope.



**Curling**

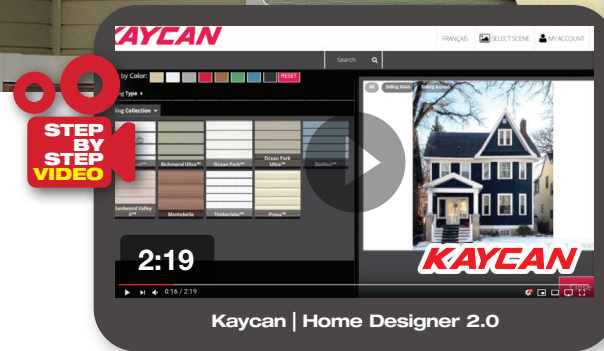
The upward curling of shingle tabs make them highly susceptible to wind and ice damage.



**Clawing**

This is the curling under of the shingle's bottom edge and is part of the normal aging process.

# Where to start when choosing vinyl siding



**VIDEO** Upload a picture of your house and sample Kaycan's siding colour and profile options.

Year after year, vinyl siding remains the popular choice for homeowners planning an exterior makeover. It offers an unbeatable combination of durability, affordability and low maintenance while available in a wide range of colours and styles. There are many factors to consider when choosing siding and it can be difficult to know where to start. Colour is one of the biggest decisions you'll have to make so start there. You can stay with your home's existing colour or you can take this opportunity to add tremendous curb appeal and change the colour to something fresh and current. Here are a few tips to help you choose your perfect colour.

**Work with the elements you can't change** Unless you are completely redoing your whole house, chances are your roof, stonework and walkway will remain unchanged. Take these elements into consideration when choosing your colour scheme. If your home's main colours are earth tones, select a shade that will tie it all together. If your home has a dramatic stone facade, choose a shade in the stone will help create a cohesive look.

**Play up your home's architecture** Whatever type of home you have, your exterior colour palette should feel appropriate to the architectural style. Some styles will look best with a single colour for the body of the house and a contrasting colour for trim. An exterior palette can also have three parts: a main colour, an accent colour and a trim colour. These colours can be different shades of the same colour for a modern look or varied for a more traditional look.

**Show off your personal style** You want your house to reflect who you are so choose a colour scheme that you love. If you are attracted to the contemporary look, choose darker tones and anchor the palette with an element in black like your front door or even the existing roof shingles. If you are adventurous, why not add a pop of bright colour to your home. Maybe that vivid orange is too bold for your entire home but placed in the gables as an accent will add a touch of flair.

**Look at the big picture** When you have narrowed down your choices, don't rely on a small colour swatch to solidify your choice. We suggest obtaining a few pieces (preferably a foot long) to get a better sense of the shade. Another thing to keep in mind, exterior colours shift depending on how the light hits them which can dramatically change them. Make sure to look at your colours during different times of the day.

## PROJECT OF THE MONTH: ROOFING & SIDING



Canada's Building Centre

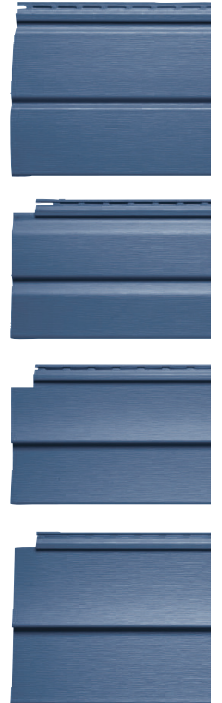
# Find the perfect siding profile

Whether remodeling, adding on, or just giving your home some extra curb appeal, choosing the right siding profile is an important step. Once you have your colour, the next step is choosing which profile is best suited to your house style. Below are a few tips to help you with your project.

**Horizontal or vertical** Your home's architecture will influence the type of profile you select. More traditional house styles will gravitate towards horizontal siding, this profile lends well to a Craftsman as well as Cape Cod styles. The unique look of beaded siding, with its distinctive shadow lines, is well suited for a Colonial house. Vertical siding is not only eye-catching; it can also give the illusion of height. We suggest using this profile on one-story homes such as ranch styles. Choosing the vertical siding in a neutral colour will also aid in creating a sense of grandeur.

**Profile size matters** Another thing to keep in mind is the width of the profile. A stately home, like a colonial, will benefit from a wider panel as it will enhance the home's ample facade. Choose a narrower profile that will cast a pronounced shadow to give off the effect of height. Once again, this is ideal for a ranch or bungalow style house.

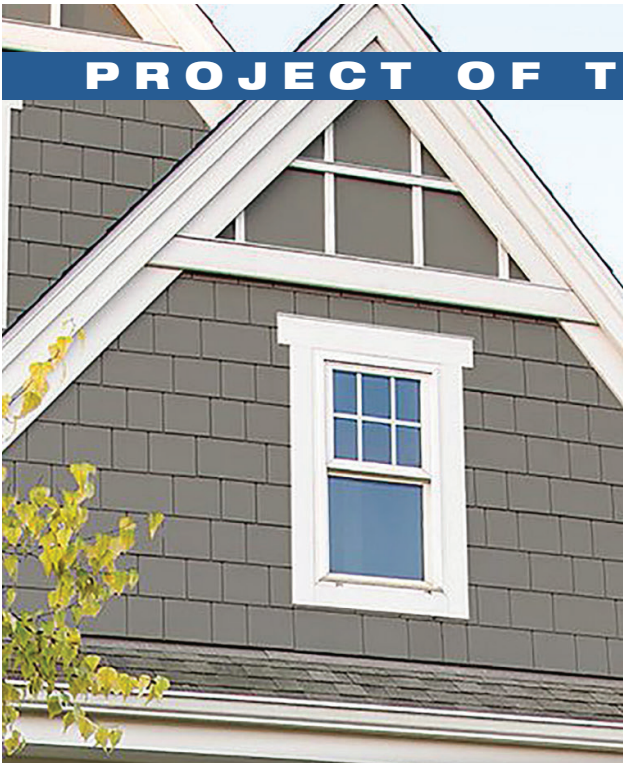
**Shake it up** Don't be afraid to mix textures when selecting materials for the exterior of your home. Adding polymeric shakes to the gables of your home will not only add visual interest, it will also provide added design dimension.



# Style options

TIMBER MART provides a number of siding style options to give your home a custom exterior. With siding profile choices, finish textures, accent and trim options, you can achieve the look and style you desire for your home.

## PROJECT OF THE MONTH: ROOFING & SIDING



# We have specialty siding

If you are considering a different look for your home that goes beyond the basic, TIMBER MART is your source for specialty siding. Whether you need a prefinished product, low maintenance hardwood or stone veneer, we have the options that will set your project apart. Specialty siding can be used for your entire house or in combination with other materials as an accent to highlight an area. We carry a wide range of siding options to complement your home's design. Choose from inspired colours and textures from trusted brands that will transform your home. Talk to a TIMBER MART Siding Specialist to find out how you can creatively add specialty siding to your project. We can help you determine the right material for your project. We'll show you the options available, discuss your preferences and budget and make sure your project meets all your expectations.





## PROJECT OF THE MONTH: ROOFING & SIDING



**VIDEO** Learn how to colour match QUAD® MAX caulk to your project

# Get the job done right

Selecting the right sealant for your job is critical for a dependable and long-lasting finish. Difficult-to-bond building materials combined with a wide range of intense weather extremes requires today's sealants to be equally effective in all conditions. Additionally, the sealant must provide reliable performance in three key areas:

- **Adhesion strength**
- **Movement capability**
- **Durability**

Over time, structures shift and flex, which means it's important to have a seal that can do the same. LePage QUAD® MAX is specially formulated to flex and move with its unique 5x stretch and 50% joint movement capability, and has superior adhesion on more building materials: On top of that, it is made to stand strong in harsh weather conditions and provide long-term protection. This makes it the ideal sealant for windows, doors and siding applications. For other applications including interior needs, LePage has the sealant solution for you and TIMBERMART has a wide selection of LePage products so you can get the job done.